

Apartment 11

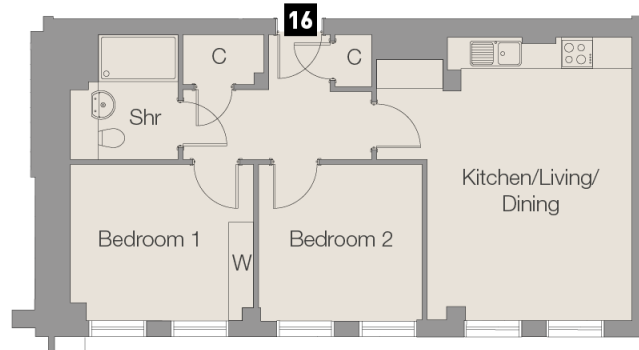
Kitchen/Living/Dining	6.70m x 5.45m	22'0" x 17'11"
Bedroom 1	5.45m x 4.36m	17'11" x 14'4"
Bedroom 2	4.70m x 2.78m	15'5" x 9'1"



Ens = En suite Shr = Shower room C = Cupboard W = Wardrobe



Upper Ground Floor

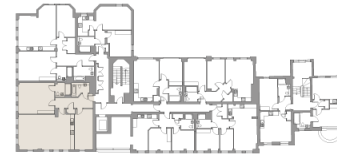


Apartment 16

Kitchen/Living/Dining	5.44m x 3.91m	17'10" x 12'10"
Bedroom 1	3.90m x 2.91m	12'9" x 9'6"
Bedroom 2	3.12m x 2.91m	10'3" x 9'6"



Ens = En suite Shr = Shower room C = Cupboard W = Wardrobe



First Floor

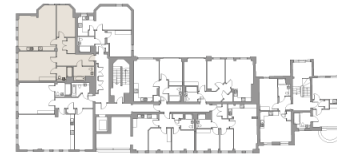


Apartment 19

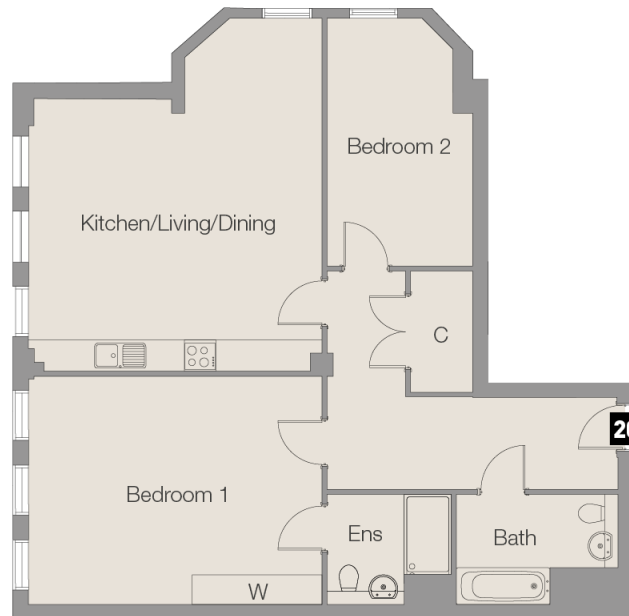
Kitchen/Living/Dining	8.20m x 5.35m	26'11" x 17'7"
Bedroom 1	5.34m x 4.59m	17'6" x 15'1"
Bedroom 2	5.97m x 2.74m	19'7" x 9'0"



Ens = En suite Shr = Shower room C = Cupboard W = Wardrobe



First Floor

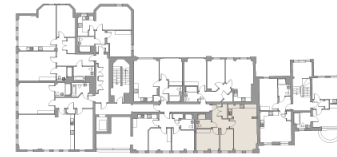


Apartment 20

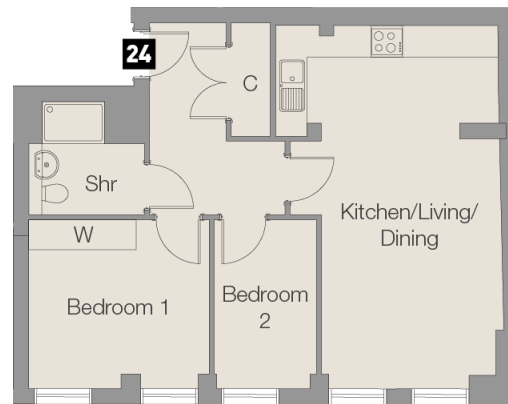
Kitchen/Living/Dining	6.68m x 5.45m	21'11" x 17'11"
Bedroom 1	5.45m x 4.36m	17'11" x 14'4"
Bedroom 2	4.70m x 2.78m	15'5" x 9'1"



Ens = En suite Shr = Shower room C = Cupboard W = Wardrobe



First Floor

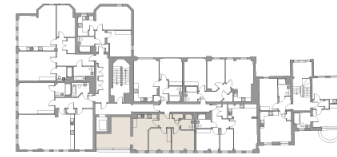


Apartment 24

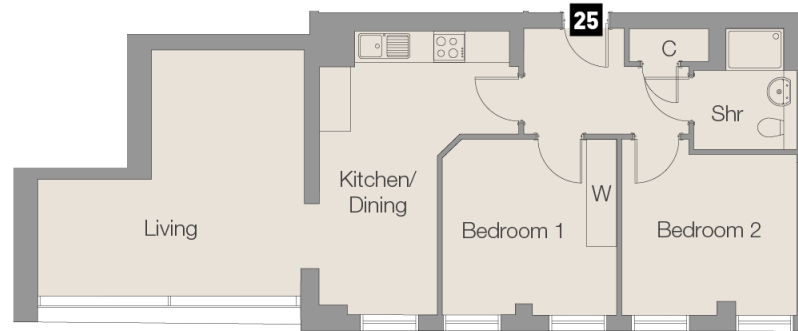
Kitchen/Living/Dining	6.88m x 3.21m	22'7" x 10'6"
Bedroom 1	3.42m x 3.17m	11'3" x 10'5"
Bedroom 2	3.19m x 1.96m	10'6" x 6'5"



Ens = En suite Shr = Shower room C = Cupboard W = Wardrobe



First Floor

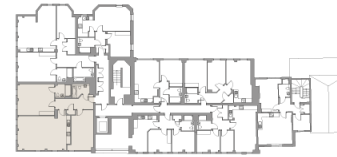


Apartment 25

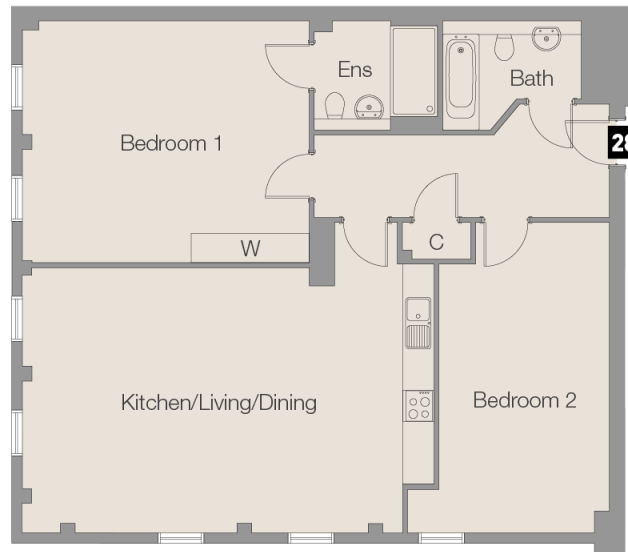
Kitchen/Dining	3.82m x 5.14m	12'6" x 16'10"
Living	4.93m x 5.08m	16'2" x 16'8"
Bedroom 1	3.32m x 3.31m	10'10" x 10'10"
Bedroom 2	3.33m x 3.31m	10'10" x 10'10"

Ens = En suite Shr = Shower room C = Cupboard W = Wardrobe





Second Floor

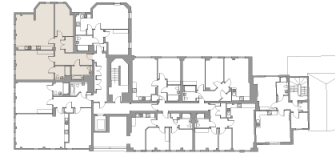


Apartment 28

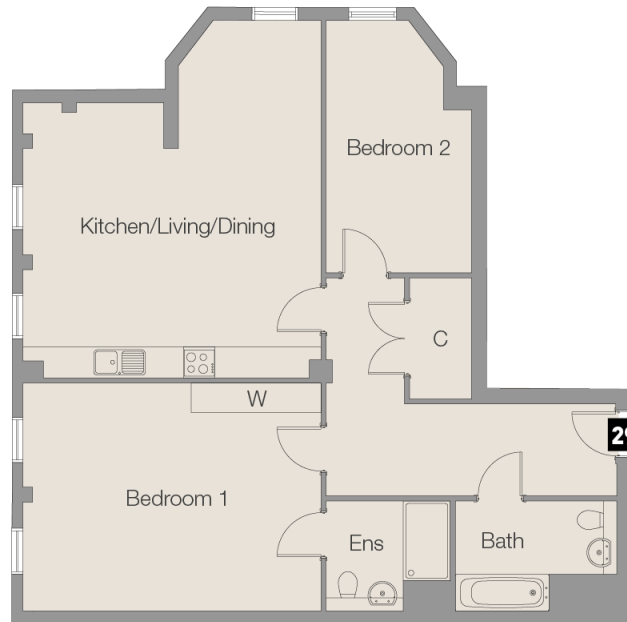
Kitchen/Living/Dining	7.71m x 5.10m	25'3" x 16'9"
Bedroom 1	5.34m x 5.35m	17'6" x 15'1"
Bedroom 2	3.24m x 5.97m	10'7" x 19'7"



Ens = En suite Shr = Shower room C = Cupboard W = Wardrobe



Second Floor



Apartment 29

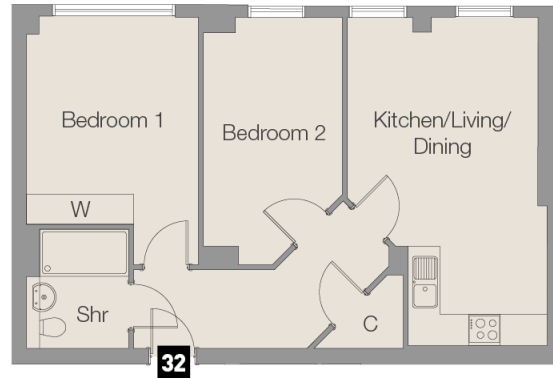
Kitchen/Living/Dining	6.68m x 5.45m	21'11" x 17'11"
Bedroom 1	5.45m x 4.36m	17'11" x 14'4"
Bedroom 2	4.70m x 2.78m	15'5" x 9'1"



Ens = En suite Shr = Shower room C = Cupboard W = Wardrobe



Second Floor

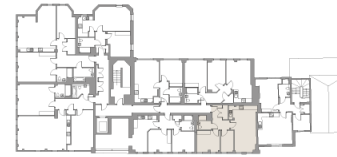


Apartment 32

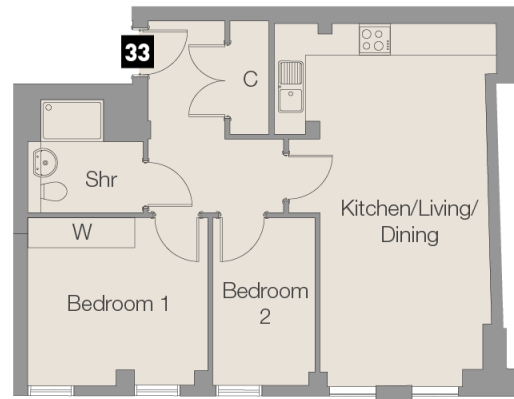
Kitchen/Living/Dining	6.23m x 4.10m	20'5" x 13'5"
Bedroom 1	3.26m x 3.26m	10'8" x 10'8"
Bedroom 2	4.64m x 2.67m	15'3" x 8'9"



Ens = En suite Shr = Shower room C = Cupboard W = Wardrobe



Second Floor



Apartment 33

Kitchen/Living/Dining	6.88m x 3.21m	22'7" x 10'6"
Bedroom 1	3.42m x 3.17m	11'3" x 10'5"
Bedroom 2	3.19m x 1.96m	10'6" x 6'5"



Ens = En suite Shr = Shower room C = Cupboard W = Wardrobe